



# Resource Centre for the Arts Visual Guide / Social Story

**For Shows at the  
LSPU Hall  
Main Stage  
3 Victoria Street  
St. John's, NL**





## The LSPU Hall

3 Victoria Street  
St. John's, NL

Visual Guide / Social Story

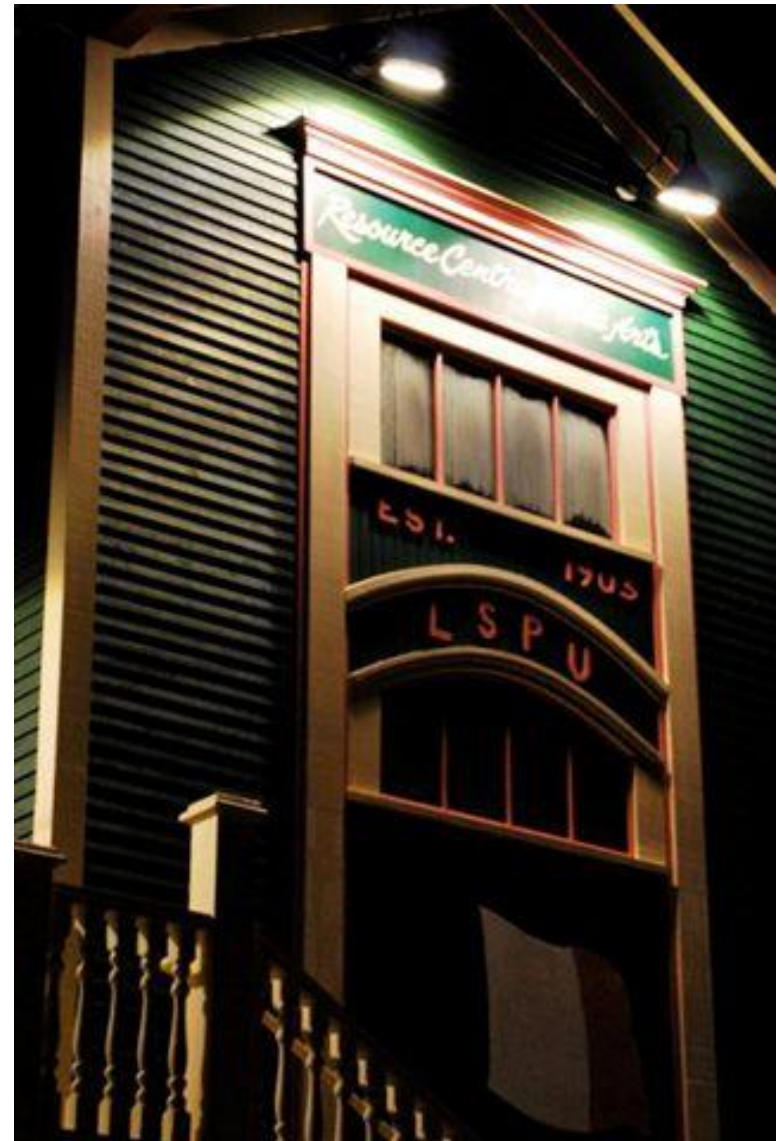


## Welcome to the LSPU Hall!

This is the LSPU Hall, located at 3 Victoria Street, in the heart of downtown St. John's.

This visual guide will introduce you to the Hall, so you are familiar with the space before you arrive for the show.

Let's take a tour!





# The LSPU Hall

3 Victoria Street  
St. John's, NL

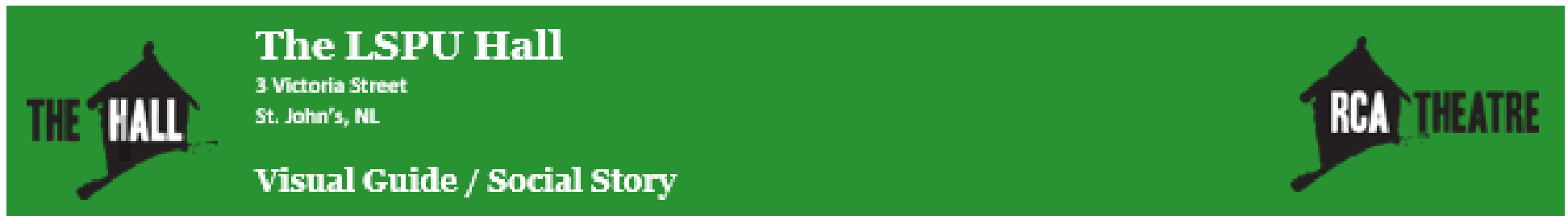
Visual Guide / Social Story



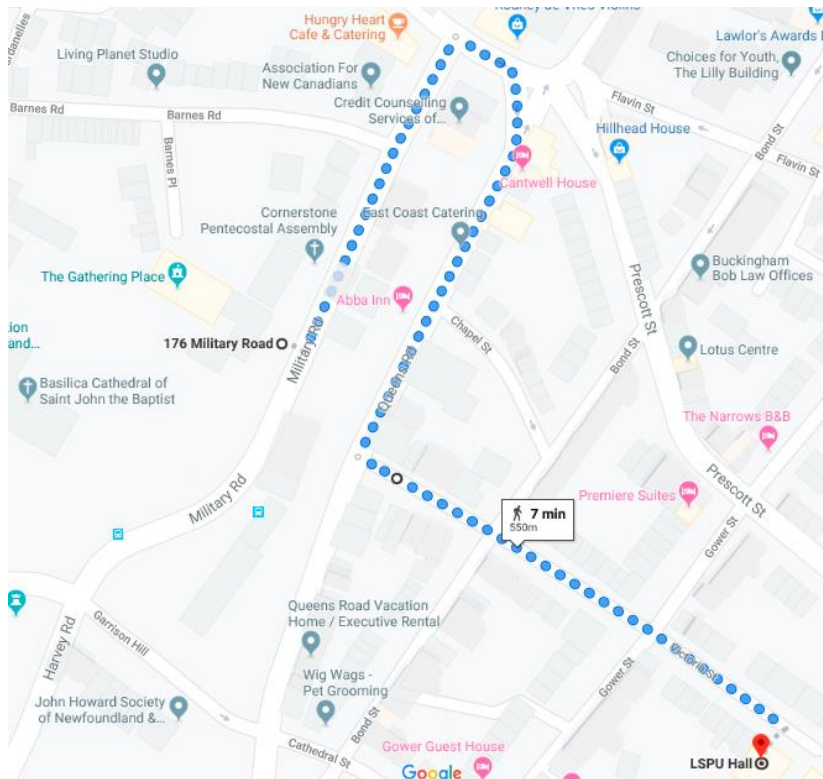
You can access the entrance to the Hall via Victoria street, or by walking up the concrete stairs that start on Duckworth street and walk up towards the outdoor stage.



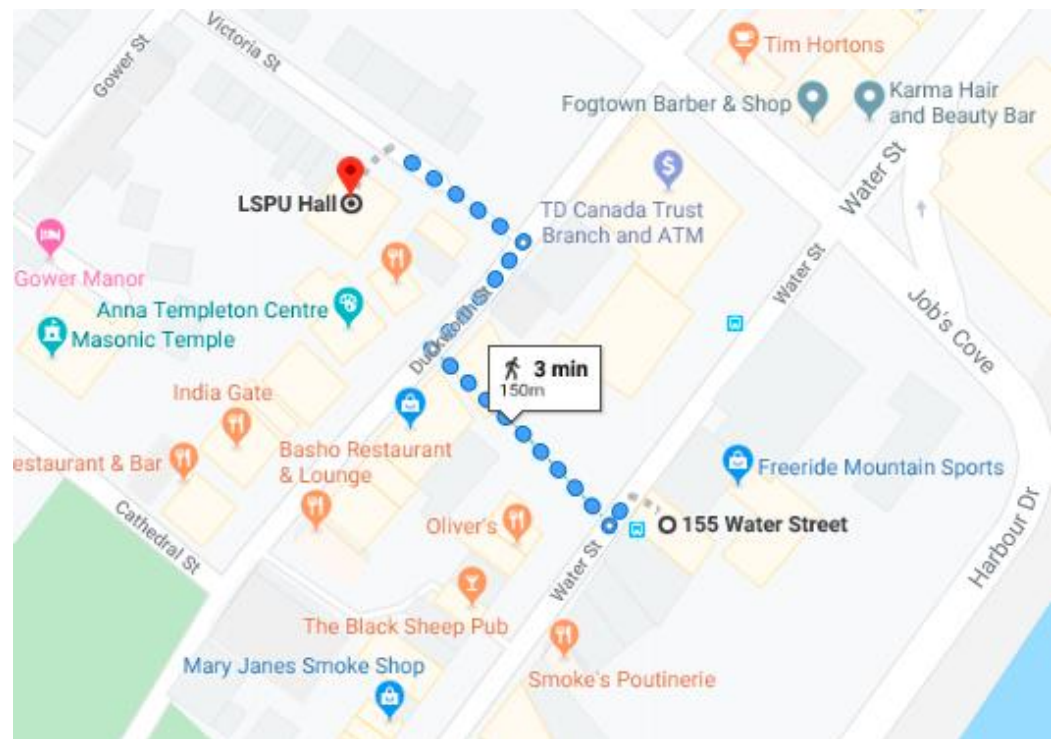




You can take the Metrobus to The Hall. The bus does not stop directly at the hall, but it is a short walk from the nearby bus stops to the hall.



The route 2, 10, and 15 all have stops on Military Road, near the Basilica. From these stops, it is a short walk from Military road, onto Queen's Road, and onto Victoria street.



The route 3 and 10 have stops near the Hall on Water street, and it is short walk to the Hall from these stops.

**\*\*You can ask the bus driver to help you find the stop that works best for you\*\***



# The LSPU Hall

3 Victoria Street  
St. John's, NL

## Visual Guide / Social Story



We have free parking for our patrons after 6 pm on weekdays, and on weekends.

### Harbour Drive Parking Lot

Located outside the Fortis Building at Harbourfront and Prescott.  
100 parking spaces are available. First Come, First Serve.



There is also parking on Prescott Street, in the Bluedrop Performance Building Parking Lot  
Located north of Duckworth, behind the Bluedrop Performance Building.  
60 parking spaces are available. First Come, First Serve.







# The LSPU Hall

3 Victoria Street  
St. John's, NL

## Visual Guide / Social Story



The entrance to the Hall has concrete steps and a ramp. There is an automated door option on the wall near the door.

The door will swing open towards you.



Victoria Street has a steep incline. Please take care when walking at night, especially during rainy weather, and in the winter.





## The LSPU Hall

3 Victoria Street  
St. John's, NL

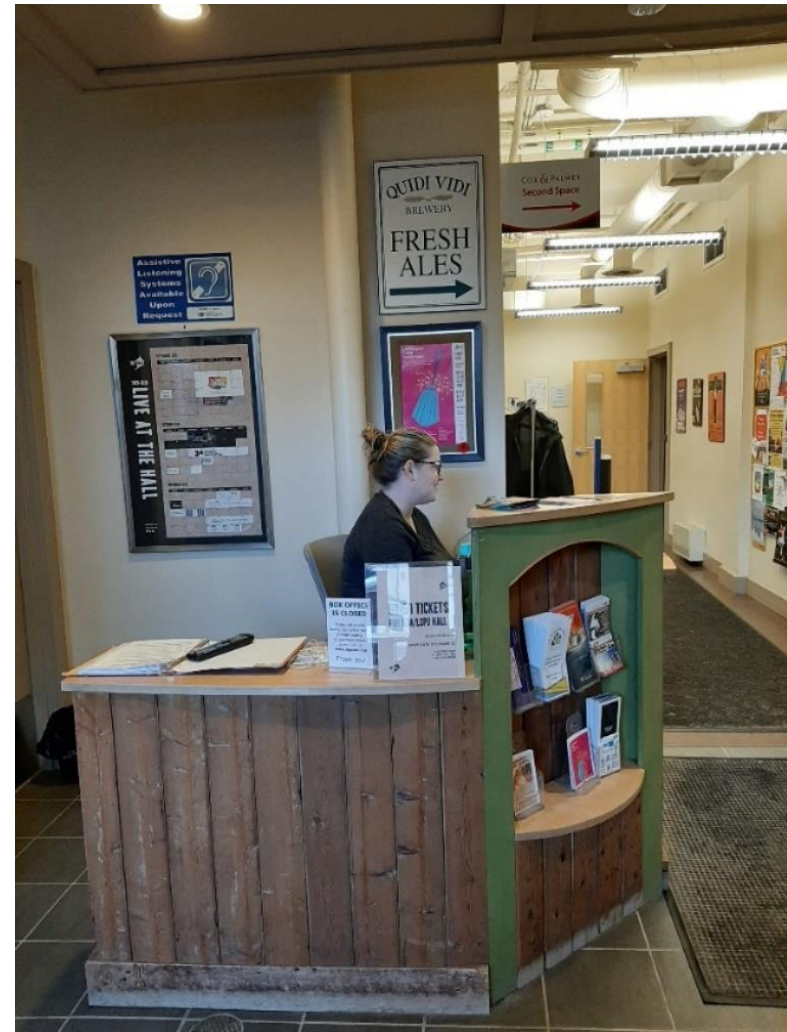
Visual Guide / Social Story



This is the **Box Office**.

This is where you can purchase your tickets during the day or pick them up on the night of the show. If you need to pick up tickets on the night of the show, make sure you give yourself enough time; there may be a lineup for tickets and a lineup at the bar.

There's Kathryn, our Box Office Manager, holding down the fort!





# The LSPU Hall

3 Victoria Street  
St. John's, NL

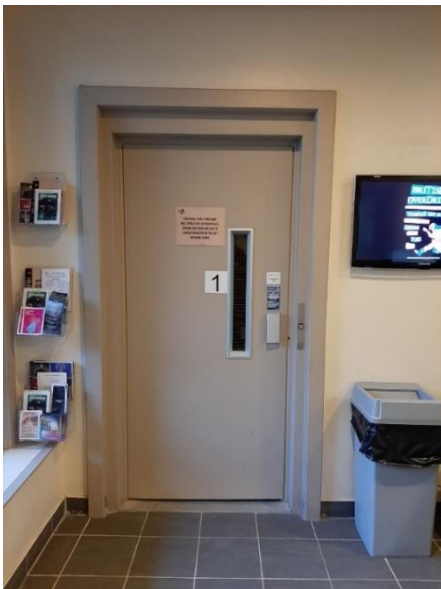
## Visual Guide / Social Story



This is the elevator that will take you up to the main stage.

It is located right next to the Box Office desk.

Everyone is welcome to use the elevator. Just inform a staff member who will assist you in using it.



This is the hall that leads from the elevator to the main stage once you exit. The main stage is just to your right! There will be a volunteer greeting folks who can help you navigate this space!





# The LSPU Hall

3 Victoria Street  
St. John's, NL

Visual Guide / Social Story

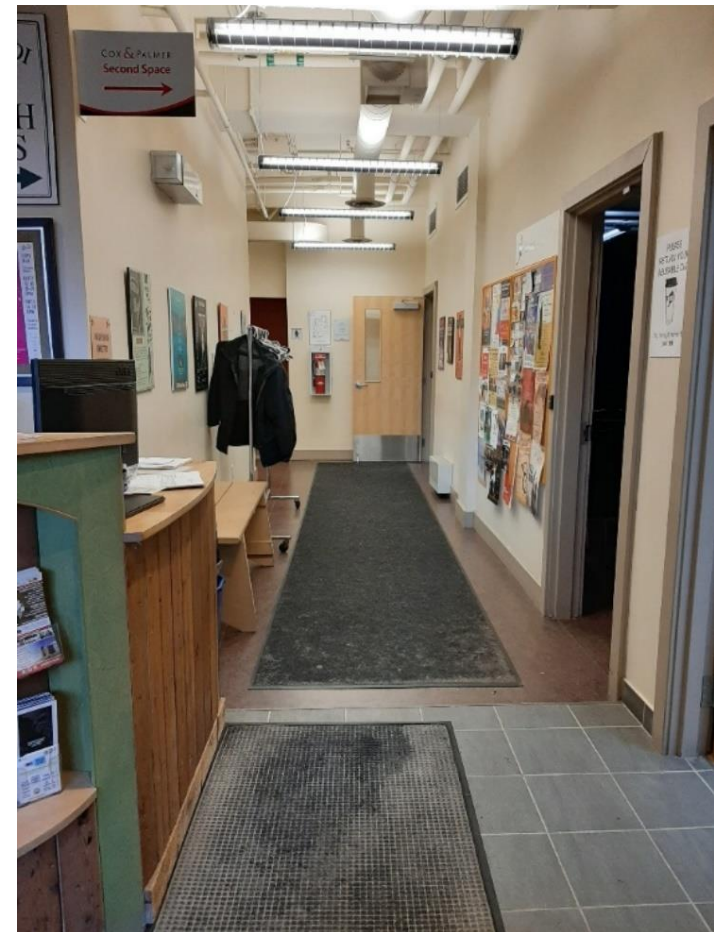


This is the front hallway.

From here you can find the washrooms, entrance to the Cox & Palmer Second Space, entrance to the main stage, and a coat rack.

You can also take your coat up into the theatre.

It can get pretty packed just before the show. If you would like to avoid getting stuck in the hall, come a little earlier, so you can find a space that is comfortable for you to hang out.





## The LSPU Hall

3 Victoria Street  
St. John's, NL

Visual Guide / Social Story



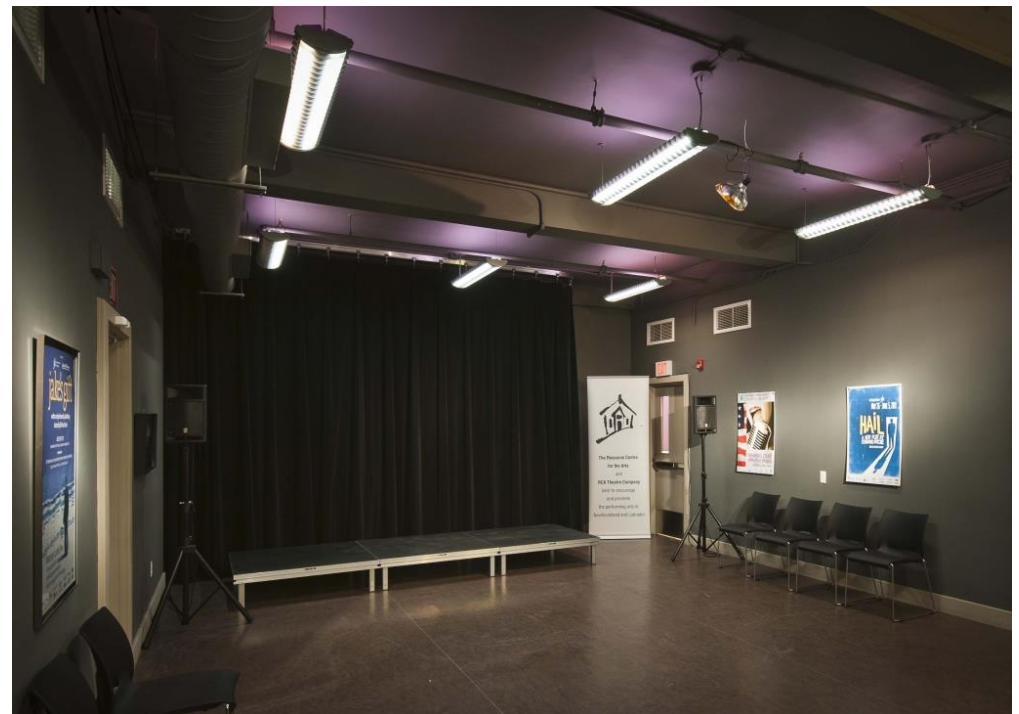
### This is the **Cox & Palmer Second Space.**

It is sometimes used as a venue too,  
for performances, readings,  
lectures, or receptions.

It is a place to mingle before the  
start of the show. There are usually  
small tables and chairs set up for  
people to sit and hang out in before  
the show starts.

You can come to the Second Space  
during the show if you need a break  
at any time.

Sometimes it is decorated  
depending on the main stage show.





## The LSPU Hall

3 Victoria Street  
St. John's, NL

Visual Guide / Social Story



This is the **Bar**. You can purchase tea, soft drinks, beer, wine, and cider. Water is free.



You may take your drinks up into the theatre in one of our plastic Hall cups.

You can return your cup in a bin upstairs or at the bar after the show.





# The LSPU Hall

3 Victoria Street  
St. John's, NL

## Visual Guide / Social Story



The washrooms are located at the end of the main hall towards the entrance to the main stage. There are wheelchair accessible stalls in each washroom.



## The LSPU Hall

3 Victoria Street  
St. John's, NL

### Visual Guide / Social Story



This is the entrance to the main stage. A volunteer will be waiting to check your ticket and rip the top off. The volunteer will be wearing a name tag around their neck that says, “Front of House”, “Volunteer”, and their name.

Once the FOH checks your ticket, you are free to enter the main stage space. The house opens 15 minutes before the show starts.





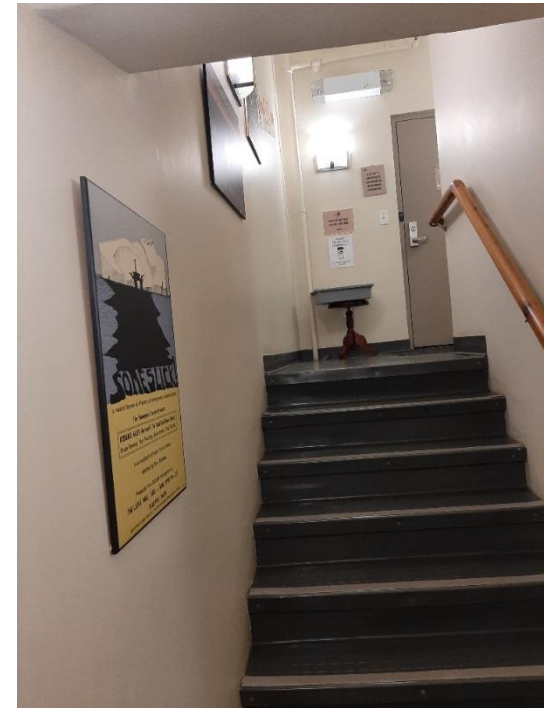
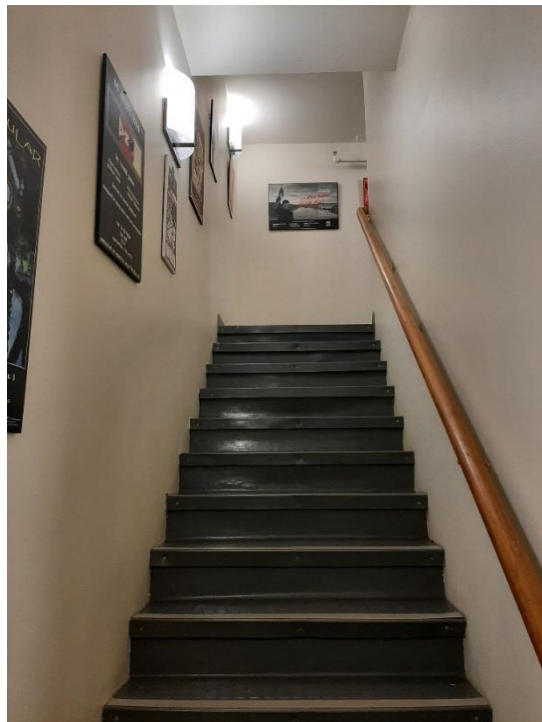
# The LSPU Hall

3 Victoria Street  
St. John's, NL

Visual Guide / Social Story



These are the stairs up into main stage. There are two flights of stairs. They are a little narrow – it may be difficult for two people to walk past each other. Check out all the cool posters of past shows on the walls!



There will be another FOH Volunteer standing at the entrance of the main stage, to hand you a program and help you find your seat. If you don't need assistance finding your seat, that's okay too!

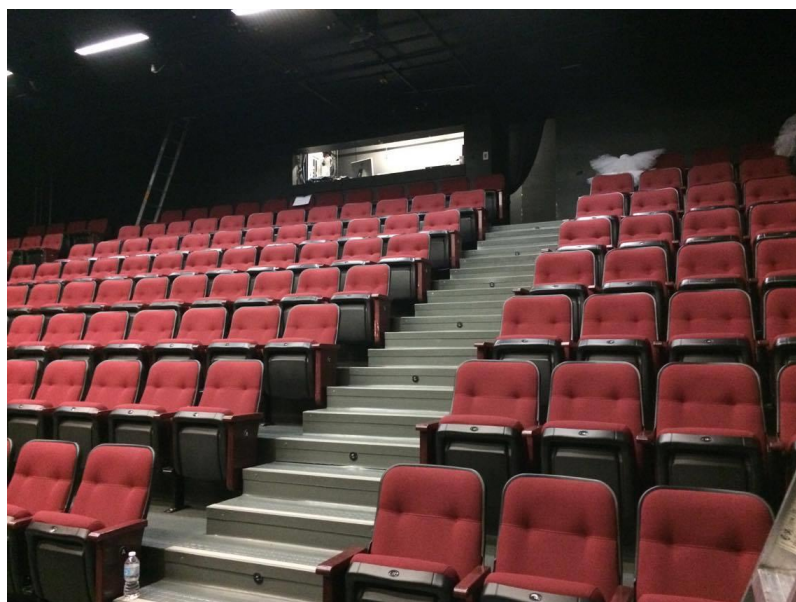




# The LSPU Hall

3 Victoria Street  
St. John's, NL

Visual Guide / Social Story



Welcome to the **LSPU Hall Main Stage!** This is what the seats look like from the main entrance.



Here's what the stage looks like from the last row of seats.

There is also a balcony on the left side of the theatre (Stage Right).





# The LSPU Hall

3 Victoria Street  
St. John's, NL

## Visual Guide / Social Story



Your ticket will have you row letter and seat number.

The seats at the end of each row are lettered so you can find which row you seat is in.

The seat numbers can be found on the underside of each seat.

The FOH Volunteers will be happy to point you to your seat!





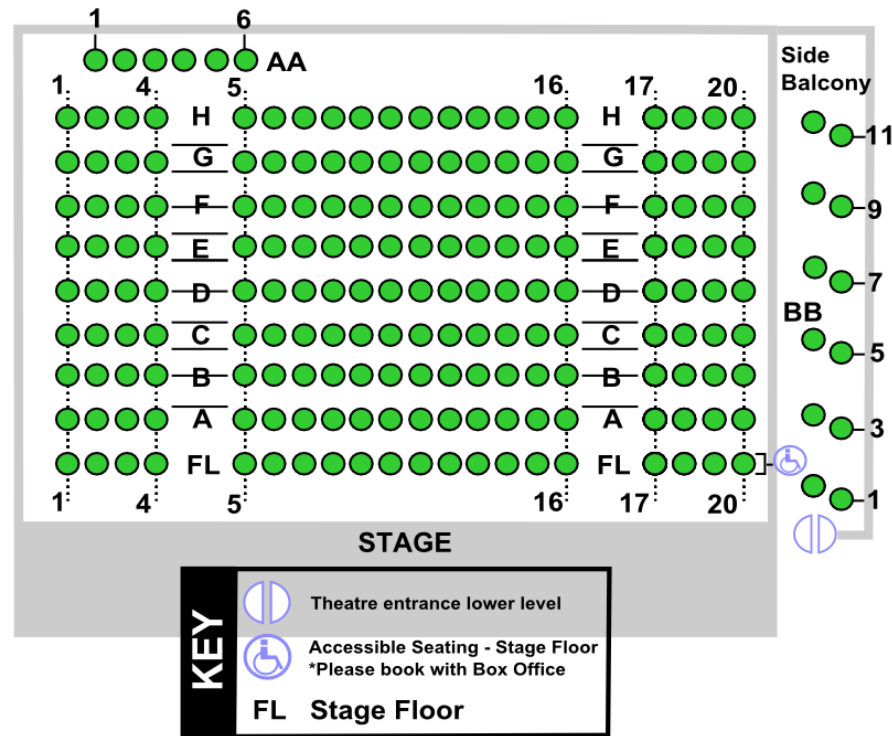
# The LSPU Hall

3 Victoria Street  
St. John's, NL

## Visual Guide / Social Story



The LSPU Hall, St. John's, NF



This is a seating map of the LSPU Hall. You can see exactly where your seat is, and how close it is to the stage, and exits!





## The LSPU Hall

3 Victoria Street  
St. John's, NL

### Visual Guide / Social Story



If you need to leave at any point during the show, you may exit the stage quietly through the door that you entered from. It may be dark so take your time and be careful!

You may go to the second space and enjoy the quiet, or you can step outside the front door to get a breath of fresh air.

The show will keep going while you are gone, but that's okay, you can catch up!





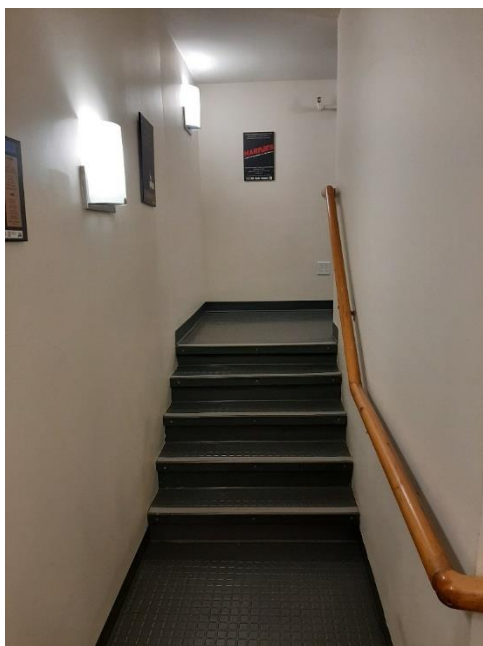
## The LSPU Hall

3 Victoria Street  
St. John's, NL

### Visual Guide / Social Story



When you are ready to reenter the theatre, you will have to go up 2 additional flights of stairs and enter through the balcony door.



It will be dark. There will be a FOH Volunteer to help you with the door and help direct you to your seat. The FOH may recommend waiting few moments to walk back to your seat, as to not disturb the performance.



# The LSPU Hall

3 Victoria Street  
St. John's, NL

## Visual Guide / Social Story



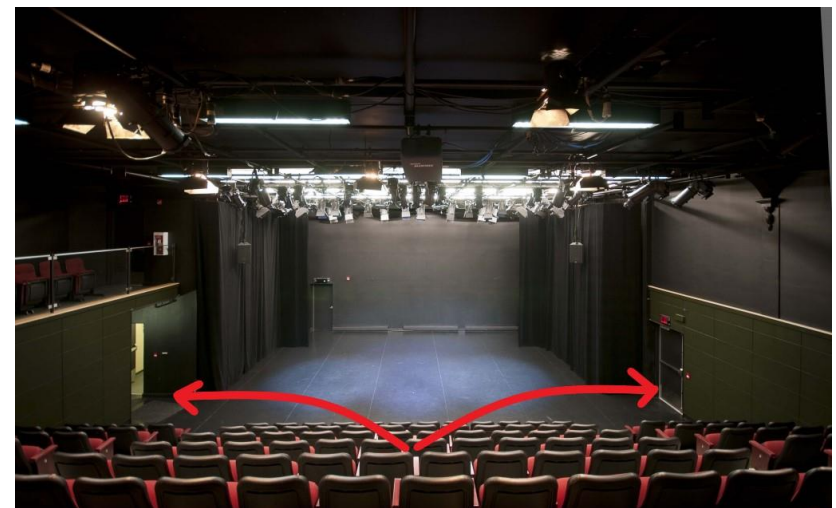
At the end of the show, the other patrons will clap for the performers; it's how we say thank you and congratulations to the artists!

Some people may stand while they clap.

There may be a second round of applause, called an Encore.

It it's too loud, you can cover your ears. If you don't want to clap, that's okay too.

After the final round of applause, everyone will begin exiting the theatre. It may take a little while for everyone to exit through the narrow stairwell. You may exit through the emergency exit door and onto a ramp that will take you out onto Victoria street, unless the space is being used to move things to / from the stage.







## The LSPU Hall

3 Victoria Street  
St. John's, NL

### Visual Guide / Social Story



Thank you for spending some  
time with us at the LSPU Hall!

We hope you enjoy the show, and  
we hope to see you again.

If you have any questions about  
anything you've seen in this guide,  
please contact our  
Communications Manager at  
[communications@lspuhall.ca](mailto:communications@lspuhall.ca).

LSPU Hall Box Office

3 Victoria Street  
St. John's, NL A1C 3V2  
Phone: (709) 753-4531 ext 200  
Fax: (709) 753-5778

Resource Centre for the Arts Theatre Company (RCAT)

223-233 Duckworth Street, Suite 207  
St. John's, NL A1C 1G8  
Phone: (709) 753-4537  
Fax: (709) 753-2261



2019-2020 Season

## Panto

by Rory Lambert

I Am A Genius Does Anyone  
Here Know Me?

by Lois Brown

## Crippled

by Paul Power

## Birthday Balloon

by Steve Cochrane

## The Dialysis Project

by Leah Lewis

## Her Closely

by Marie Jones