



Resource Centre for the Arts  
Visual Guide / Social Story



HER  
CLOSELY

For

***Her Closely***

Showing at the  
**LSPU Hall Main Stage**

June 11 & 12, 8 PM

June 13, 2 PM





## *Her Closely*

LSPU Hall Mainstage  
June 11 & 12, 8 PM  
June 13, 2 PM

**Visual Guide / Social Story**



HER  
CLOSELY

In 1955, Felice walks a large volume of letters to the train station in Rye, NY. In the last years of her life, parting with them seems her most valuable lifeline. Felice in 1912, a Berlin typist-become-sales-executive, keeps to a state of constant motion and supports her family household. Then while visiting a cousin in Prague, she encounters a law clerk craving the life of a successful writer.

Weeks later, he abruptly initiates a connection with her through the mail – it might be one of musing and hope for a settled life, it might fuel an inferno of inner-turmoil and validation-seeking. A move to America and decades later, Felice's side of the dialogue destroyed, can she be witnessed in the release of Franz Kafka's letters? Or does letting go cast her in greater shadow?







## *Her Closely*

LSPU Hall Mainstage  
June 11 & 12, 8 PM  
June 13, 2 PM

Visual Guide / Social Story



HER  
CLOSELY

**Welcome back to the LSPU Hall!**

**There have been a lot of changes to the way we move around our space since the beginning of the pandemic, and we have been working hard to make it as safe and comfortable as possible for all patrons. Please have a read through our new building regulations:**

**Patrons are required to wear a mask** when moving through the building as per NL Public Health guidelines. Masks must remain on while you are seated in the theatre and **can only be removed when consuming food or beverages.**

**Please respect physical distancing** and stay 6 feet apart from others while moving around the building. Hand sanitizing stations will be available throughout the building and will be clearly marked.





## *Her Closely*

LSPU Hall Mainstage  
June 11 & 12, 8 PM  
June 13, 2 PM

### Visual Guide / Social Story



HER  
CLOSELY

**House opens 1 hour prior to showtime.** You will be given an arrival time based on the row you are sitting in. Please arrive in that window to avoid congestion in the lobby.

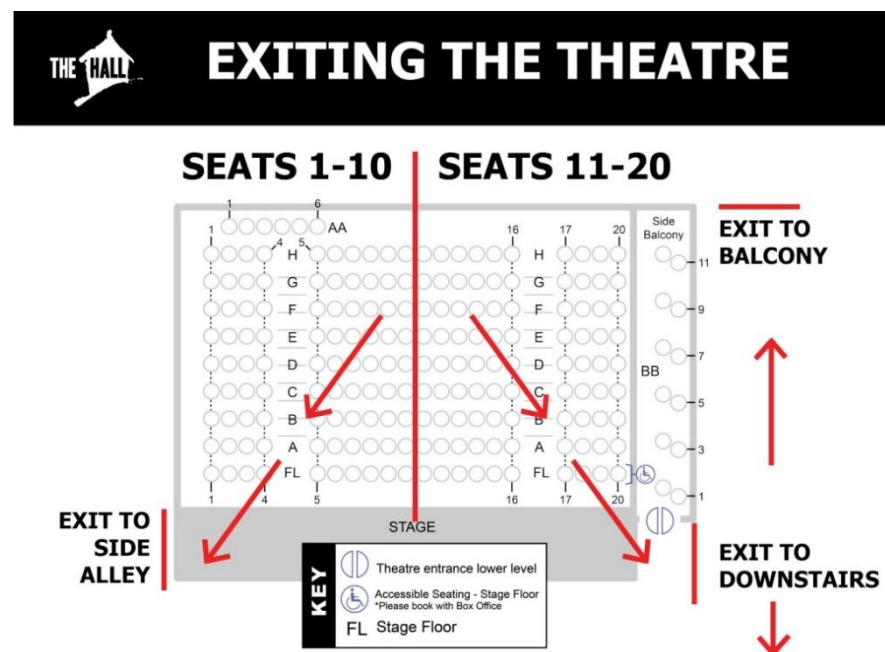
**No latecomers will be admitted to the theatre.** Please arrive with enough time to be seated before the show.

**We ask you to leave the Hall one row at a time once the event is over,** starting with the front row to maintain social distancing. Patrons on the right side of the theatre will leave through the side stage exit. Patrons on the left side will either leave through the main exit, or through the balcony exit, or down the lift. Staff/ushers will be on hand to help guide patrons to the appropriate exit.

**We ask that you leave the building as soon as the show is over – loitering is not permitted.**

For more information on our new COVID 19 building policies, please view our LSPU Hall Visual Guide at

<http://lspuhall.ca/wp-content/uploads/2020/12/2021-LSPU-Hall-Visual-Guide.pdf>





## *Her Closely*

LSPU Hall Mainstage  
June 11 & 12, 8 PM  
June 13, 2 PM

Visual Guide / Social Story



Let us introduce you to the Cast & the Crew of  
*Her Closely*





## *Her Closely*

LSPU Hall Mainstage  
June 11 & 12, 8 PM  
June 13, 2 PM

**Visual Guide / Social Story**



### Andrya Duff - Felice

Andrya Duff is a multidisciplinary artist from St. John's. Some of her favourite performance projects include; The Baroness Von Sketch Show (Choreographer/Dancer - Season 3), Pleasure Principle (Ryan McNamara - Harbourfront Centre), Blue Mouth Group (Dance Marathon - Harbourfront Centre), Circus Orange (Tricycle - World Pride, Hamilton SuperCrawl, Rochester Fringe), Theater Rusticle (Dinner at 7:30/The Stronger Variations - Buddies in Bad Times), Sore for Punching You (Exhale - Citadel, Dancemakers), The Proust Project (Canstage Festival), Queer Comedy Collective (T.O. Sketch Fest, Buddies in Bad Times), and over a decade with the Scandelles (Buddies in Bad Times, Luminato, MOCA, Summerworks). Most recently Andrya was co-choreographer of The Fire Kedgys' Howl produced by Neighbourhood Dance Works and presented by the National Arts Centre.





## *Her Closely*

LSPU Hall Mainstage  
June 11 & 12, 8 PM  
June 13, 2 PM

**Visual Guide / Social Story**

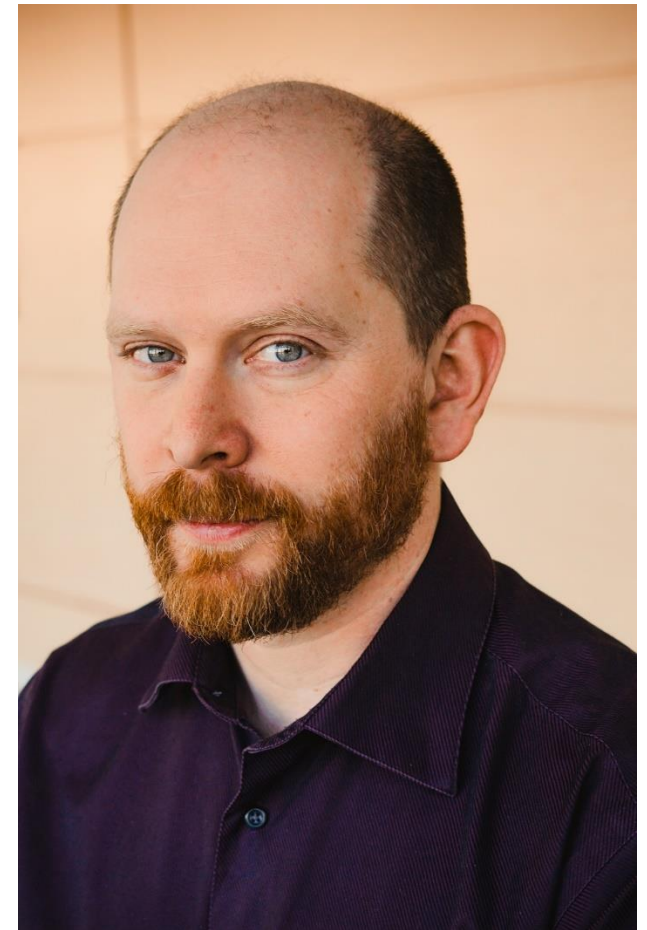


HER  
CLOSELY

Patrick Foran - Actor (Kafka), Producer & Co-creator

Previously for Double Sure Theatre: Proud, Nailbiter.

Other Theatre: Julius Caesar, A Servant of Two Masters (Perchance) God of Carnage, Island in the Sky (Stephenville), Nobleman's Wedding, Pirates of Penzance (Rising Tide), Twelfth Night (Driftwood), Corpse Bride (Theatre PaNik). TV: Being Erica, Republic of Doyle, Sons of Terra Nova. Film: The Care Package, Stolen, Incredible Violence.







## *Her Closely*

LSPU Hall Mainstage  
June 11 & 12, 8 PM  
June 13, 2 PM

**Visual Guide / Social Story**



HER  
CLOSELY

### Sheldon Downey – Stage Manager

Sheldon is a technical artist from St. Johns who works in Stage Management for theatre, opera, and shadow puppetry, and as a lighting tech for theatre, film, and television. He holds a BFA in Technical Theater Production (MUN Grenfell Campus), and has worked with Perchance Theatre (Julius Caesar, Servant of Two Masters, Crippled), LSPU Hall (Venue Technician), Opera on the Avalon (As One, Dead Man Walking, Tosca), and Under the Bridge Productions (Brass Button Man, The Kraken) to name a few. He sits on the Board of Directors of the Association of Professional Theatres of Newfoundland and Labrador, and is passionate about the advancement of Newfoundland art and its artists.







## *Her Closely*

LSPU Hall Mainstage  
June 11 & 12, 8 PM  
June 13, 2 PM

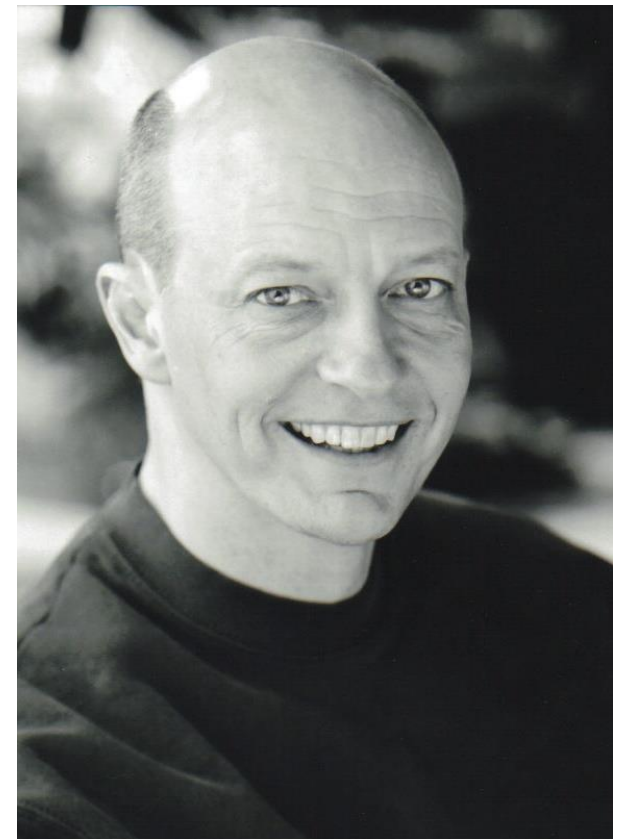
Visual Guide / Social Story



HER  
CLOSELY

### Alex Fallis - Director & Co-creator

Alex Fallis has been an active member of the Canadian professional arts scene for over 40 years. He is an actor, singer, teacher, and director. Alex has performed and directed across Canada and in the US, Europe and Asia. He is currently on the faculty of Grenfell Campus, Memorial University, teaching acting and theatre history. At Grenfell, Alex has directed a number of shows including *The Tempest* (as one of the first pandemic zoom performances!), *Three Sisters*, and *The Wolves*. He has been involved as director in the creation of numerous collective plays, and is extremely pleased to be able to present *Her Closely* at one of the great homes of collective theatre, the LSPU Hall





## *Her Closely*

LSPU Hall Mainstage  
June 11 & 12, 8 PM  
June 13, 2 PM

Visual Guide / Social Story



HER  
CLOSELY

### Marie Jones - Playwright & Co-creator

Playwright - Marie Jones is a theatre artist hailing from Lac Ste. Anne Co., AB. Her Closely is her first full-length writing. In NL she's been a part of Persistence Theatre, New Curtain Theatre, the Stephenville Theatre Festival, Rising Tide Theatre and Artistic Fraud. Her work has taken her to stages across Canada and the US.





## *Her Closely*

LSPU Hall Mainstage  
June 11 & 12, 8 PM  
June 13, 2 PM

**Visual Guide / Social Story**



HER  
CLOSELY

### Michael Rigler - Projection Design & Puppet Builder

Michael Rigler is an award-winning visual artist, performer and writer. He worked as a freelance visual artist, photographer and director in Toronto, Berlin and London before moving to Newfoundland where he wrote and directed and edited the award-winning independent horror/comedy *The Tentacle's Claw*.

He designed and built an original shadow puppet show (*St. George and the Dragon*) with his wife Tara Manuel. He designed the digitally animated artwork, the shadow puppet cast - (many of which he performed) and played Raven (a hand and rod puppet he built) for [The Lady of the Falls](#). He is currently signed onto a new collaborative Virtual Reality project based in California.







## *Her Closely*

LSPU Hall Mainstage  
June 11 & 12, 8 PM  
June 13, 2 PM

Visual Guide / Social Story



HER  
CLOSELY

### Renate Pohl - Lighting Design & Set Consultant

Renate has had a lot of fun working on *Her Closely* with Double Sure Theatre Company. Locally, Renate has designed for: RCA Theatre Co.; Arts and Culture Centres; She Said Yes!; NAX; White Rooster; C2C; Artistic Fraud; Opera on the Avalon; and TNL. Other: Eastern Front Theatre (Halifax); Mixed Company, Nightswimming (Toronto); Old Earth Productions, Free Will Players (Edmonton); and Union Theatre, Greenwich Theatre, Bush Theatre, New Ambassadors Theatre, Arcola Theatre, and Heart and Soul (London, UK). Renate is a Resident Designer and Associate Professor of Technical Theatre Production at MUN, Grenfell Campus. Upcoming: *The Mirror* with PerSIStance.





## *Her Closely*

LSPU Hall Mainstage  
June 11 & 12, 8 PM  
June 13, 2 PM

Visual Guide / Social Story



HER  
CLOSELY

### Gerry Dunne - Carpenter (Table)

Gerry is an artisan and carpenter who lives in Flatrock, NL. Having spent more than 45 years in the industrial trades where he built everything from model ships at Oceanic to staircases in heritage homes, Gerry is happiest when working on custom furniture pieces in his shop.







## *Her Closely*

LSPU Hall Mainstage  
June 11 & 12, 8 PM  
June 13, 2 PM

**Visual Guide / Social Story**



HER  
CLOSELY

### Heather Kent - Table Designer

Heather is a freelance theatre designer and educator. She is passionate about working in devised creations and original works. She has worked for theatres and schools across Canada; Douglas College, Theatre Calgary, Alberta Theatre Projects, Quest Theatre, The Banff Centre, Sheridan College, and Humber College. Her interest in Puppetry Arts has led her to study and work with artists from the Old Trout Puppetry Workshop, Puppetmongers, and Ronnie Burkett. She has a B.F.A in Theatre Design from UBC and an M. Ed. in Art Education from UVIC.







## *Her Closely*

LSPU Hall Mainstage  
June 11 & 12, 8 PM  
June 13, 2 PM

Visual Guide / Social Story



HER  
CLOSELY

The **lighting design** for *Her Closely* attempts to fulfill opposing needs for cohesion and fragmentation in the production themes of passion, intimacy, and anxiety conveyed in the letters between the characters of Franz and Felice. The multiple angles and use of a colour system of hot/cold mixing to white allows for layers of fragmented coloured shadows to emerge through performance action such as letters fluttering in the air.

The handheld lights also serve as a vehicle for puppet shadows to grow to life, creating a repetition of forms on stage that connect the puppets with the environment. The layered softness and curvy forms of the mixed coloured light on the set complements the style of Michael Rigler's projection illustrations, while the exposed side lights provide a nod to modernist machinery and function.





## *Her Closely*

LSPU Hall Mainstage  
June 11 & 12, 8 PM  
June 13, 2 PM



HER  
CLOSELY

### Visual Guide / Social Story

*Her Closely* features **Puppets!** The puppets are closely related to the Nang Yai shadow puppets of Thailand - where the puppets and the puppeteers' forms are visible and part of the performance. They can be used in silhouette or in front of the screen. Traditionally, they're made of cured, dyed and cut Buffalo hide; mine are made from heavy gauge wire, cut card, feather and some coloured gels.

"I was trying to create a cast of characters that could come in and out of Kafka's consciousness, alive in both his creative and concrete worlds. The projected backgrounds started as ink and a water drawing which I scanned, coloured and digitally animated. There's a lot of interplay of light & shadow, human & puppet in this piece and it may not look like traditional theatre, but that's what happens when you let puppets into your play!... and it's my way of paying homage to the incredibly rich and complicated world that Kafka created." – Michael Rigler, Designer







## *Her Closely*

LSPU Hall Mainstage  
June 11 & 12, 8 PM  
June 13, 2 PM

**Visual Guide / Social Story**



HER  
CLOSELY

Thank you for taking the time to read through our Visual Guide / Social Story for *Her Closely*.

We also have a Visual Guide for the LSPU Hall available on our website under the Accessibility Section. There you will find more pictures & information about the theatre space before you visit us.

<http://lspuhall.ca/accessibility/>

If you have any questions about anything you have seen in this guide, please contact our Communications Officer at [communications@lspuhall.ca](mailto:communications@lspuhall.ca).

We hope you enjoy the show & thank you for choosing Resource Centre for the Arts for your night out!

### **LSPU Hall Box Office**

3 Victoria Street, St. John's, NL A1C 3V2 Phone: (709) 753-4531 ext 200

### **Resource Centre for the Arts Theatre Company (RCAT)**

3 Victoria Street, St. John's, NL A1C 3V2 Phone: (709) 753-4537

