



Resource Centre for the Arts Visual Guide

**Welcome to
the LSPU Hall!**

**We are located at 3 Victoria
Street, in the heart of
downtown St. John's.**

**This visual guide will introduce
you to the LSPU Hall, (also
called "The Hall") so you are
familiar with the space
before you arrive
for the show.**



[ID: A horizontal photo of the Hall, a dark green building with white and pink trim. There are two doors on either side with small windows. The middle has eight windows in two rows of four with signs that says Resource Centre for the Arts EST. 1903 LSPU. The green, white, and pink NL republic flag is underneath.



The LSPU Hall

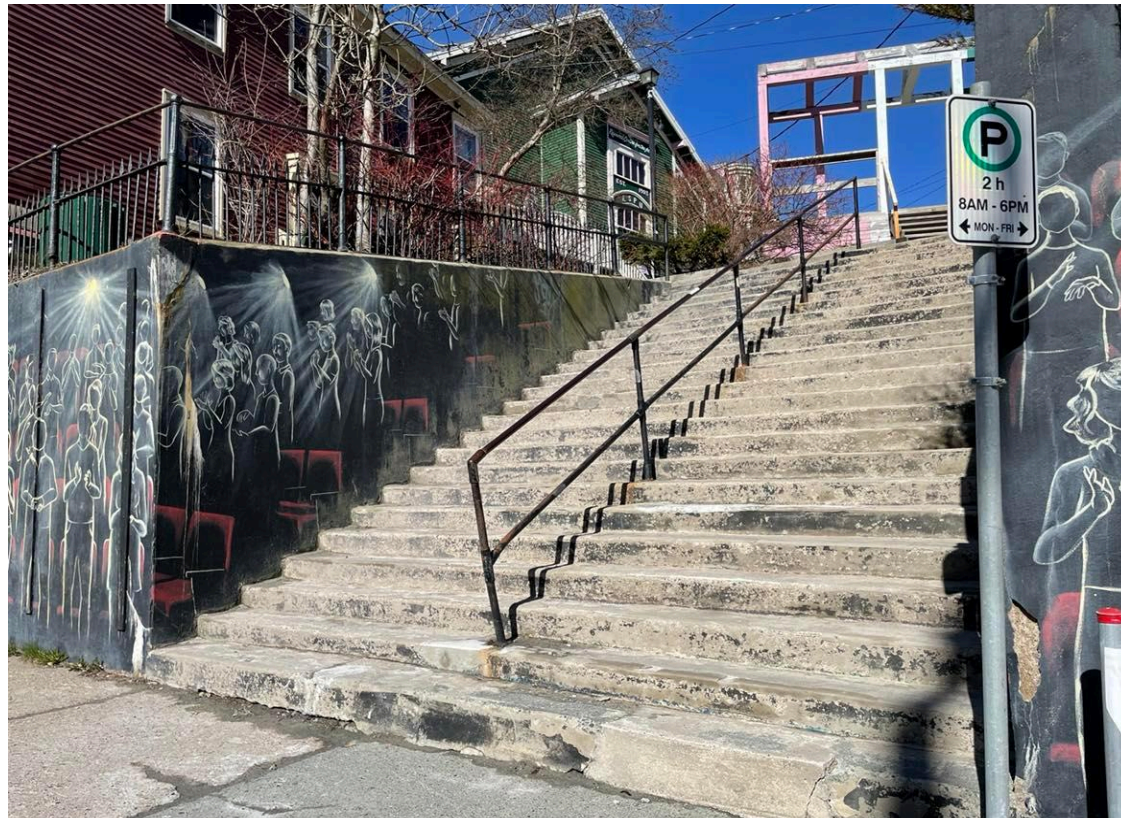
3 Victoria Street
St. John's, NL

Visual Guide / Social Story

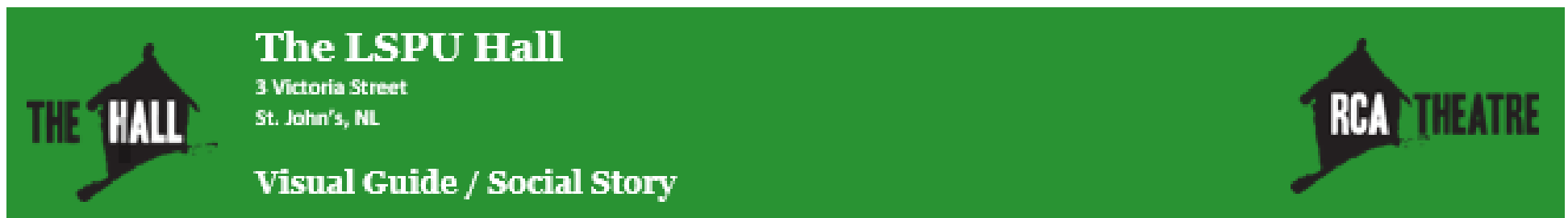


Getting to The Hall:

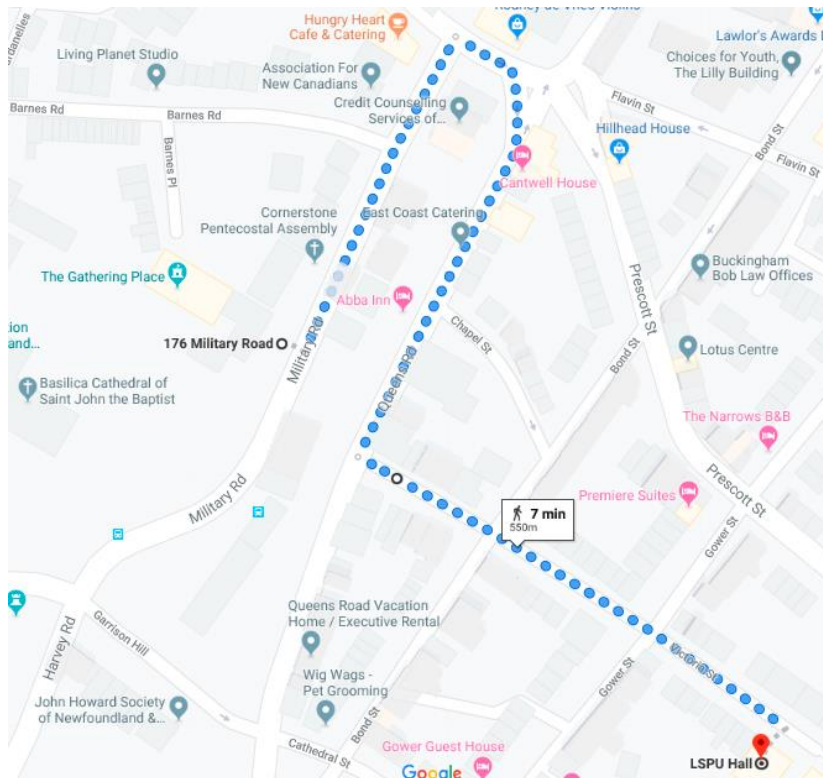
You can access the entrance to The Hall via Victoria street, or by walking up the concrete stairs that start on Duckworth street and walking up towards the pink, white, and green painted gazebo.



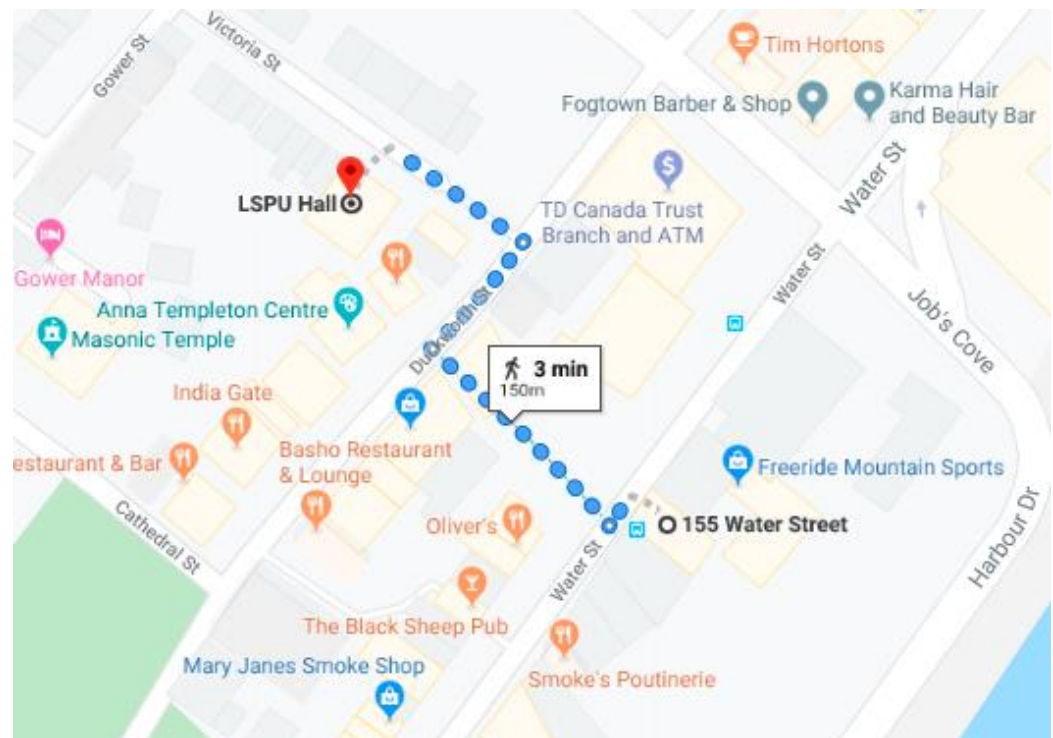
[ID: A photo of concrete stairs with a rail in the middle of them. The Hall and a gazebo can be seen at the top.]



You can take Metrobus to The Hall! The bus does not stop directly at The Hall, but it is a short walk from the nearby bus stops.



The route 2, 10, and 15 all have stops on Military Road, near the Basilica. From these stops, it is a short walk from Military road, onto Queen's Road, and onto Victoria street.



The route 3 and 10 have stops near the Hall on Water street, and it is short walk to the Hall from these stops.



The LSPU Hall

3 Victoria Street
St. John's, NL

Visual Guide / Social Story



There is free parking for patrons (a person who attends a performance at the theatre) downtown, after 6 pm on weekdays, and all day on weekends.

Harbour Drive Parking Lot

Located outside the Fortis Building at Harbourfront and Prescott.

100 parking spaces are available.

First come, first serve.



[ID: A photo of the Harbour dr parking lot. Multiple cars are parked in front of multiple buildings.]

There is also parking on Prescott Street, in the Bluedrop Performance Building parking lot, located north of Duckworth, behind the Bluedrop Performance Building. 60 parking spaces are available.

First come, first serve.



[ID: A photo of the parking lot behind the Blue Drop building. A red circle shows where to go.]



The LSPU Hall

3 Victoria Street
St. John's, NL

Visual Guide / Social Story



The entrance to the Hall has concrete steps and a ramp.

There is an automated door button on the wall near the door.

The door will swing open towards you.

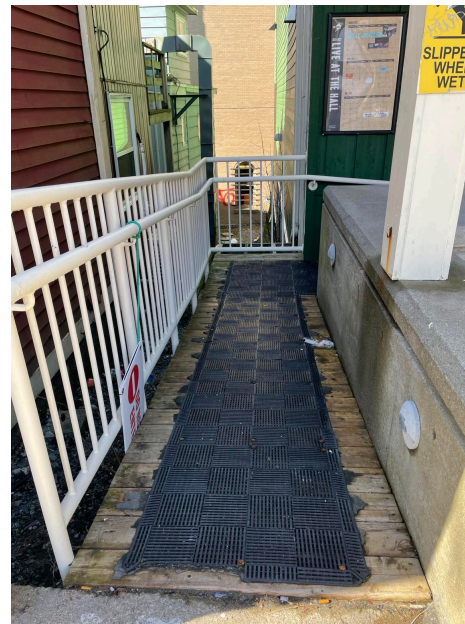


[ID: A photo of the outside of the box office entrance.]



[ID: A photo of the silver and blue automated door button.]

Victoria Street is located on a steep hill. Please take care when walking at night, especially during rainy weather, and in the winter.



[ID: A photo of the ramp at the entrance of the box office.]



[ID: A photo of the stairs leading down to the box office door.]



The LSPU Hall

3 Victoria Street
St. John's, NL

Visual Guide / Social Story



This is the **Box Office**. The box office is a place where people can purchase and access their tickets.

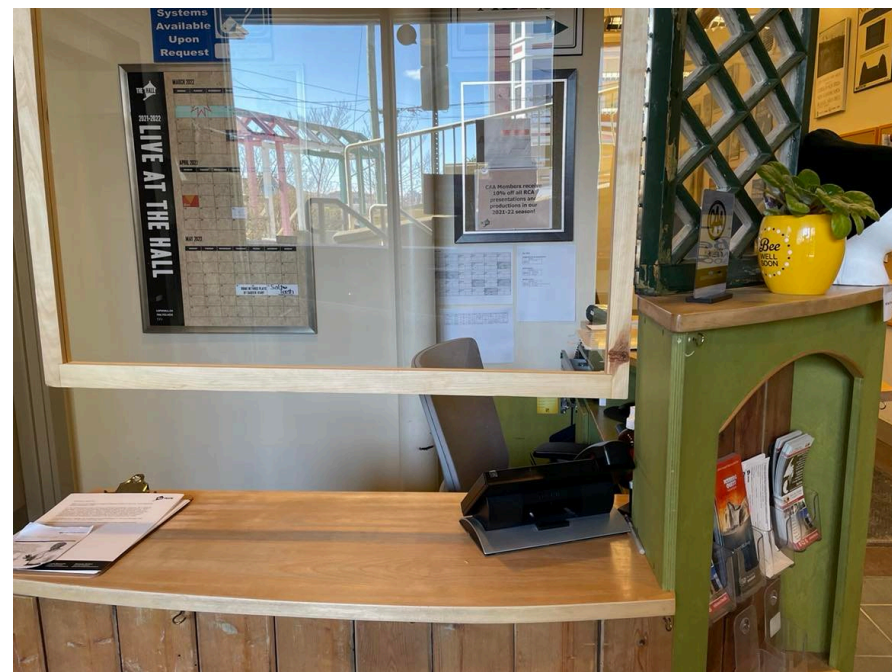
Ticket sales can be booked over the phone or in person during Box Office hours (Monday to Friday, 12pm-5pm) or anytime online at tickets.lspuhall.ca.

The box office can take cash, credit, or debit.

Your tickets can be emailed to you at the time of purchase as a **mobile/e-ticket** or print at home ticket. Please save the ticket on your mobile phone or print the attached PDF to bring with you to the theatre.

If you are in person you can get your ticket printed at time of purchase if you wish.

This is also where you can ask for assistance if you need help with the Lift.



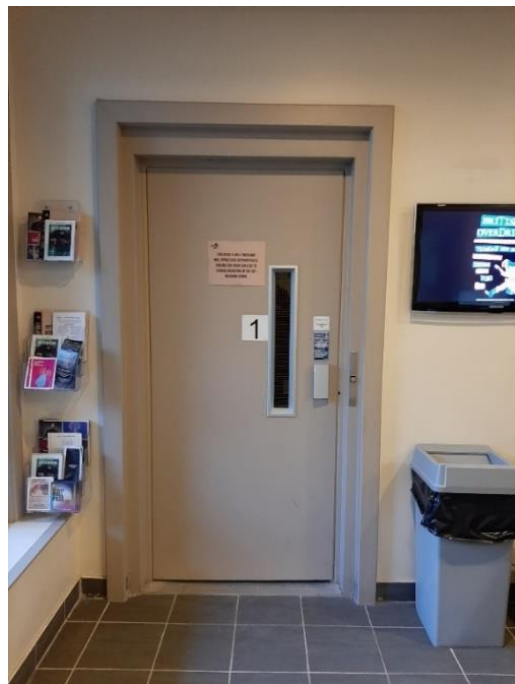
[ID: A photo of the box office. a desk with a phone and various object on it. A plastic barrier hangs from the ceiling.]



The LSPU Hall

3 Victoria Street
St. John's, NL

Visual Guide / Social Story



[ID: A photo of the elevator with door closed.]



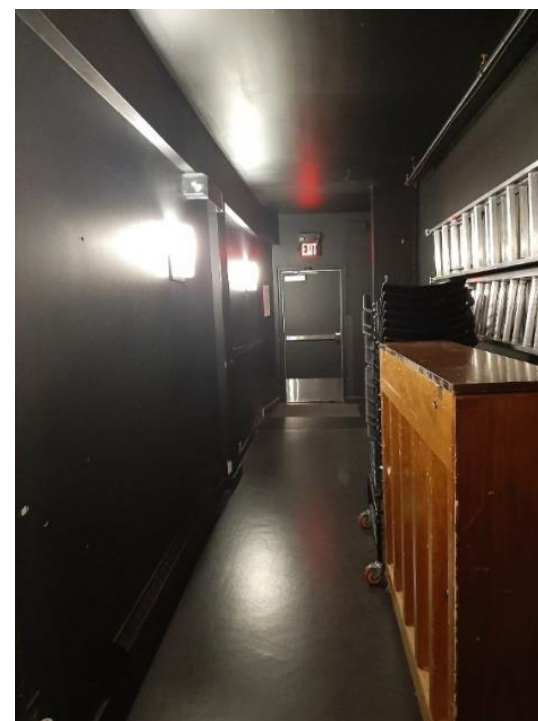
[ID: A photo of the inside of the elevator.]

^This is the elevator that will take you up to the Main Stage.

It is located right next to the Box Office desk.

Everyone is welcomed to use the elevator.
Just inform a staff member who will assist you in using it.

This is the hall that leads from the elevator to the Main Stage, which is a short distance down the hall and to your right! There will be a volunteer greeting folks who can help you navigate this space! v



[ID: A photo of a black hall way. A door is at the end with an exit sign above.]



The LSPU Hall

3 Victoria Street
St. John's, NL

Visual Guide / Social Story

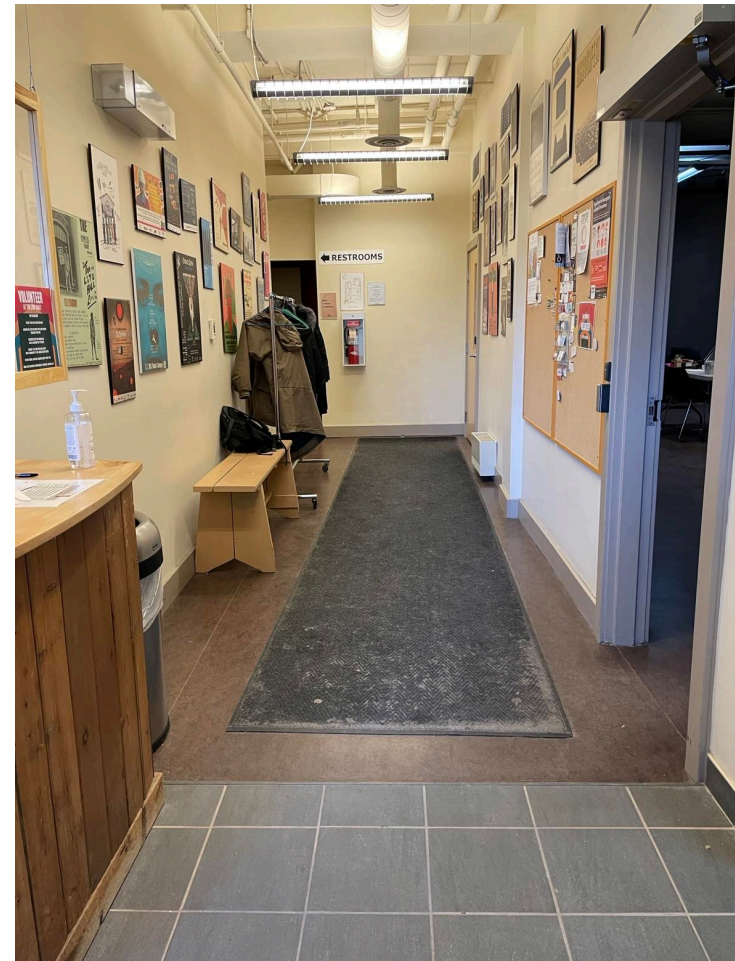


This is the front hallway.

From here you can find the restrooms, entrance to the Cox & Palmer Second Space, and entrance to the main stage.

You can take your coat up into the theatre or hang it on the coat rack; whatever makes you most comfortable!

Please note that the coat rack will be unsupervised for the majority of the time.



[ID: A photo of a hall way. A black mat goes the length of the floor. Various posters are on the walls. A coat rack is on the left.]



The LSPU Hall

3 Victoria Street
St. John's, NL

Visual Guide / Social Story



This is the **Cox & Palmer Second Space.**

It is sometimes used as a venue for performances, readings, lectures, or receptions.

You can come to the Second Space during a mainstage show if you need a break at any time.

Sometimes it is decorated depending on the main stage show or holiday.



[<ID: a photo of a door way.]

[ID: A photo of a room with a black curtain and small stage on the floor.]





The LSPU Hall

3 Victoria Street
St. John's, NL

Visual Guide / Social Story



This is the **Bar** in the Second Space. There is a plexiglass shield hanging between the bar and patrons. You can barely see it reflected in the picture below!

You can purchase hot chocolate, tea, soft drinks, beer, wine, coolers and cider. Water is free.



[ID: A plastic Hall cup in front of the bar menu.]



[ID: A photo of a bar with light below it. A plastic barrier hangs from the ceiling. A chalkboard menu and glasses are behind.]

You may take your drinks up into the theatre in one of our plastic Hall cups. You may also drink directly from a can or glass bottle. No glasses are permitted in the theatre.

You can return your cup in a grey bin upstairs or at the bar after the show.



The LSPU Hall

3 Victoria Street
St. John's, NL

Visual Guide / Social Story



^[ID: A photo of the Restroom sign.]

[ID: A red wall with a white square Restroom sign with images of a urinal, toilet, hand under water, person in a wheelchair, and a baby.] >



<[ID: A white wall with a square Restroom sign with images of a toilet, hand under water, person in a wheelchair, and a baby. A red wall is behind and to the right.]

The restrooms are located just before the entrance to the Main Stage. Our restrooms are gender neutral, so you may go wherever you are comfortable. One restroom has just stalls, while the other has a stall and urinals. Both restrooms have change tables and accessible stalls. The restrooms have automatic motion-detector lights, so they may be dark when you first enter.



The LSPU Hall

3 Victoria Street
St. John's, NL

Visual Guide / Social Story

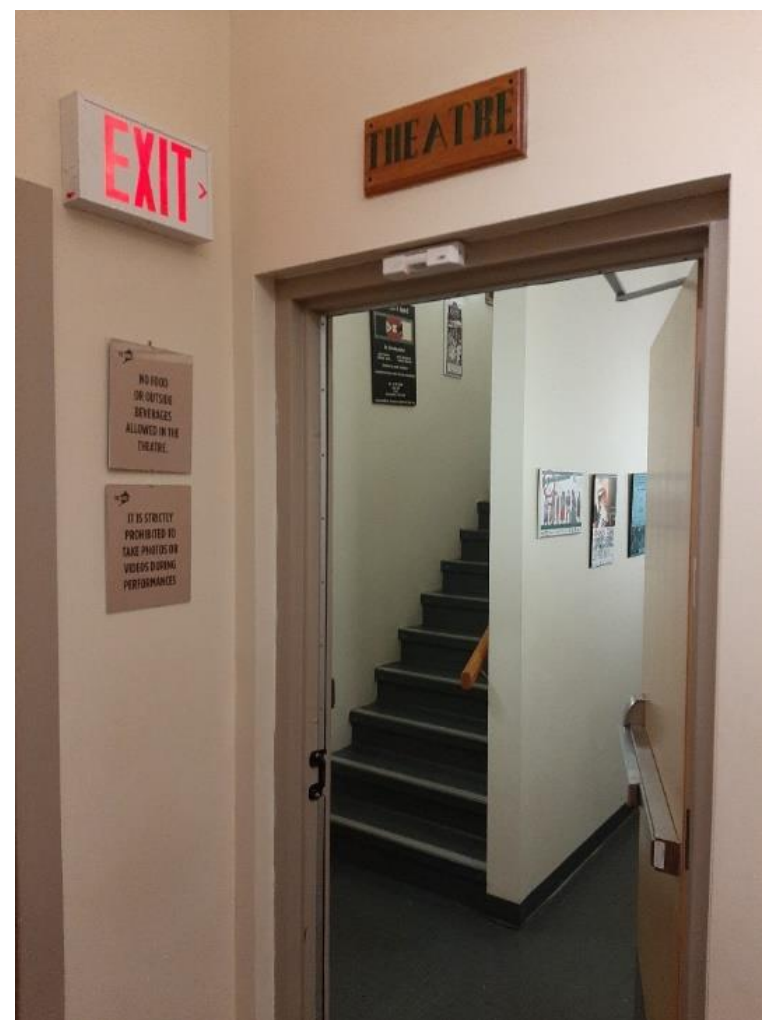


This is the **entrance to the Main Stage**.

The house opens 45 minutes before the show starts. Once it is open, which means you are allowed to go upstairs to your seat, a Front of House volunteer (or FOH volunteer) will be waiting here to check your ticket.

You can either have the ticket on your phone, printed out on paper, or printed at the box office.

The volunteer will be wearing a name tag around their neck that says, "Front of House Volunteer", and their name.



[ID: A photo of a doorway. Stairs can be seen through it that lead up. A sign above says Theatre. An exit sign is to the left.



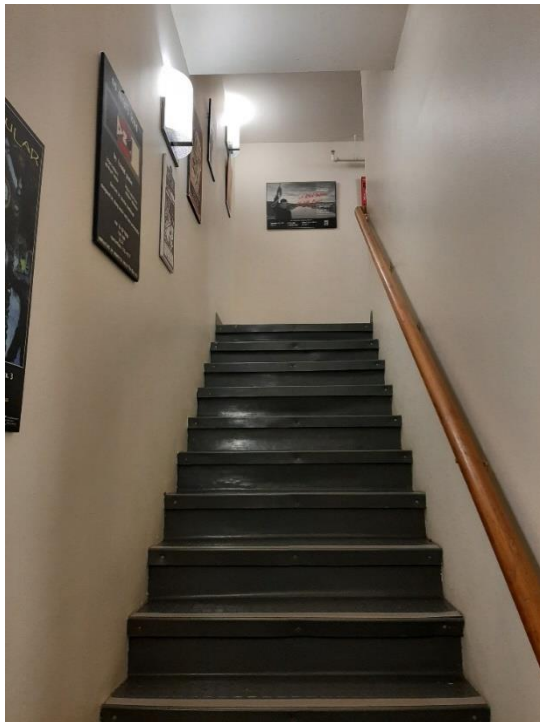
The LSPU Hall

3 Victoria Street
St. John's, NL

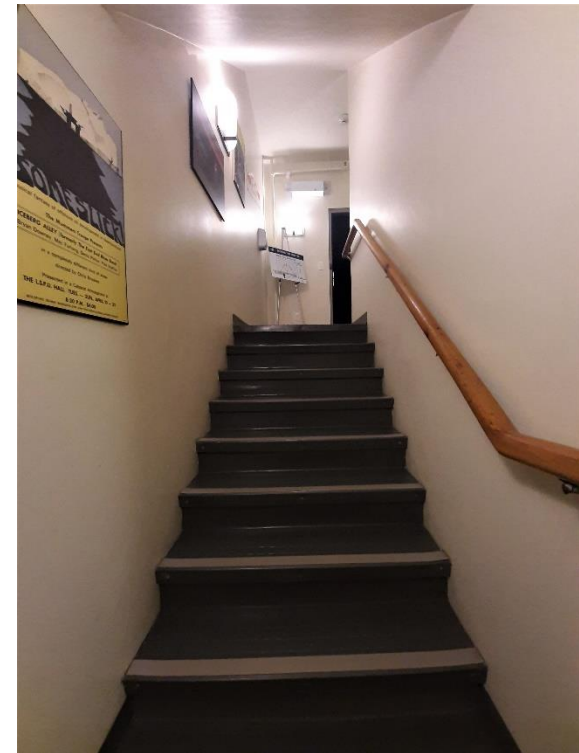
Visual Guide / Social Story



These are the stairs up into main stage. There are two flights of stairs to the main door. They are narrow so please hold on to the hand rail on the wall. You can check out all the cool posters of past shows on the walls as you go up.



[ID: A photo of stairs. Posters line the walls. A railing is to the right.



[ID: A photo of stairs. Posters line the walls. A railing is to the right.

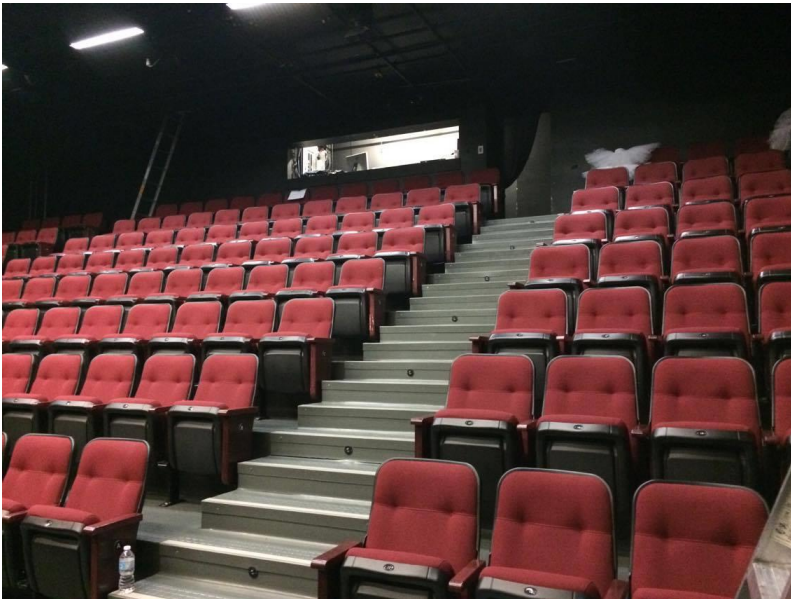
There will be another FOH Volunteer at the entrance of the main stage; they will greet you and offer to help you find your seat. If you do not need assistance finding your seat, that is okay too!



The LSPU Hall

3 Victoria Street
St. John's, NL

Visual Guide / Social Story



[ID: A photo of red theatre seats.]

Welcome to the **LSPU Hall**
Main Stage! This is what
the seats look like from the
main entrance.



[ID: A photo of the stage from behind the red theatre seats.]



^This is what the stage
looks like from the last
row of seats!

< There is the balcony
on the left side of the
theatre (Stage Right).

[ID: A photo of one row of red theatre seats
along the balcony.]



The LSPU Hall

3 Victoria Street
St. John's, NL

Visual Guide / Social Story



Your ticket will have your row letter and seat number.

The seats at the end of each row are lettered so you can find which row your seat is in.

The seat numbers can be found on the underside of each seat.

The FOH Volunteers will be happy to point you to your seat!



[ID: ^A photo of the side of a red theatre seat. The letter B is on the side.]

V A photo of a red theatre seat from the front. The number 14 is on the front.]

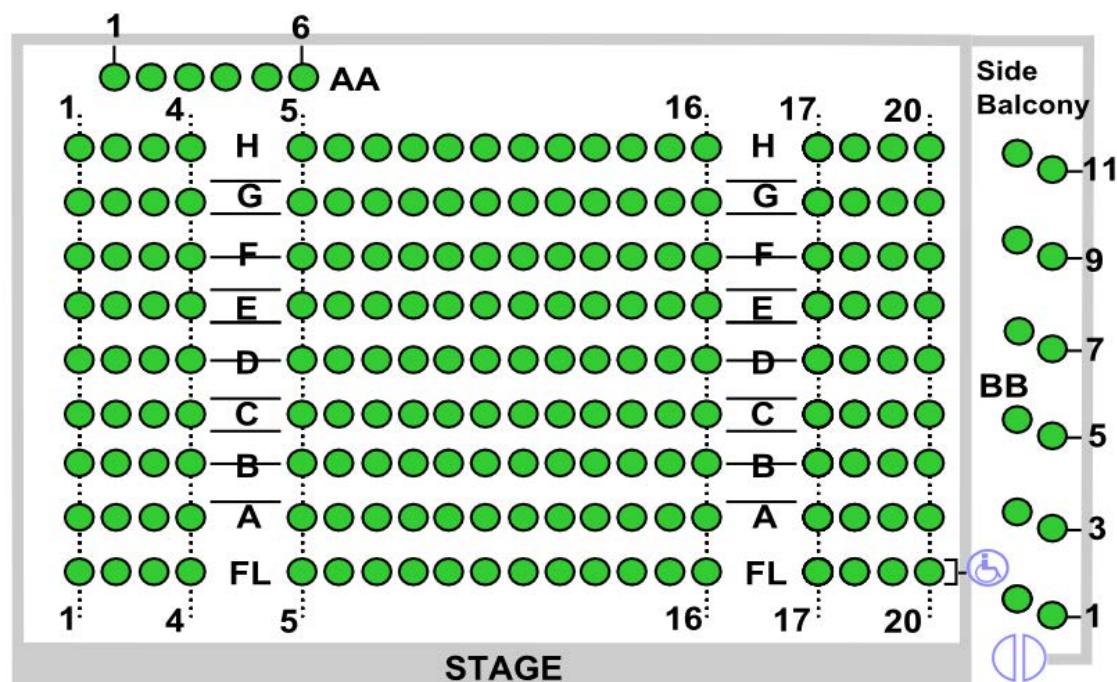




The LSPU Hall

3 Victoria Street
St. John's, NL

Visual Guide / Social Story



[ID: An image of the Hall seating map. Seats are shown as green circles. Seat numbers are indicated by the 1 on the left side of the map, then four seats over there's a 4 then a space for the stairs, a 5, then twelve seats and a 16, space for stairs, a 17, four seats and a 20. Rows are indicated by FL which stands for floor row. Then A-H leading up. The balcony seats on the right side are indicated by the BB and numbers 1, 3, 5, 9, 11. At the bottom of the image text reads Stage.

This is a seating map of the LSPU Hall. You can see exactly where your seat is, and how close it is to the stage, and exits.



The LSPU Hall

3 Victoria Street
St. John's, NL

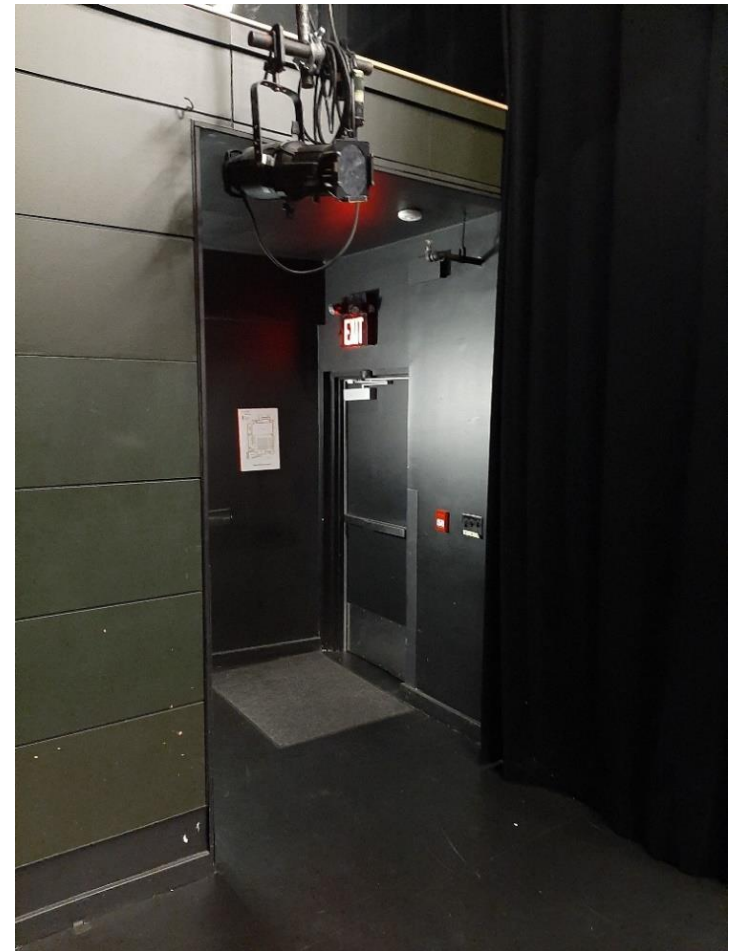
Visual Guide / Social Story



If you need to leave at any point during the show, you may exit the stage quietly through the door that you entered from. It may be dark so take your time and be careful!

You may go to the Second Space and enjoy the quiet, or you can step outside the front door to get a breath of fresh air.

If you don't wish to return you can watch the rest of the show on the tv in the Second Space.



[ID: A photo of the black door that leads out of the theatre. An exit sign is above it.]



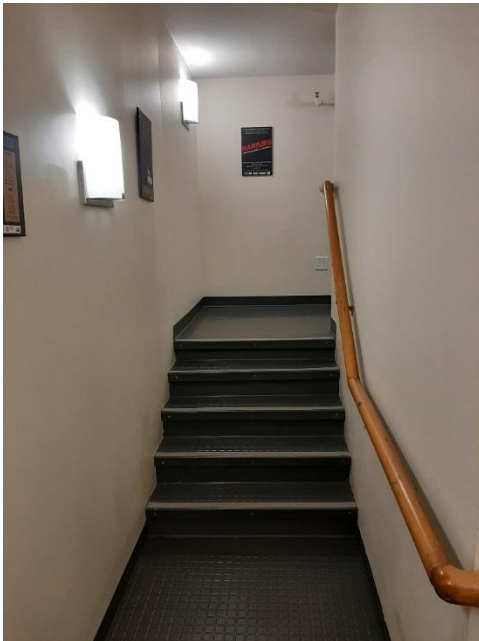
The LSPU Hall

3 Victoria Street
St. John's, NL

Visual Guide / Social Story



When you are ready to reenter the theatre, you will have to go up 2 additional flights of stairs and enter through the balcony door.



[ID: Two photos of the smaller staircase that leads to the balcony.]



[ID: A photo of a door way that leads to the balcony.]

It will be dark. There will be a Volunteer to help you with the door and help direct you to your seat. The FOH may recommend waiting few moments to walk back to your seat, as to not disturb the performance.



The LSPU Hall

3 Victoria Street
St. John's, NL

Visual Guide / Social Story



[ID: A photo of various people clapping in a theatre.]

At the end of the show, the other patrons will clap for the performers; it is how we say thank you for the performance and congratulations to the artists on their work!

Some people may stand while they clap.

There may be a second round of applause, called an Encore.

If it is too loud, you can cover your ears or leave the theatre. If you do not want to clap, that's okay too.



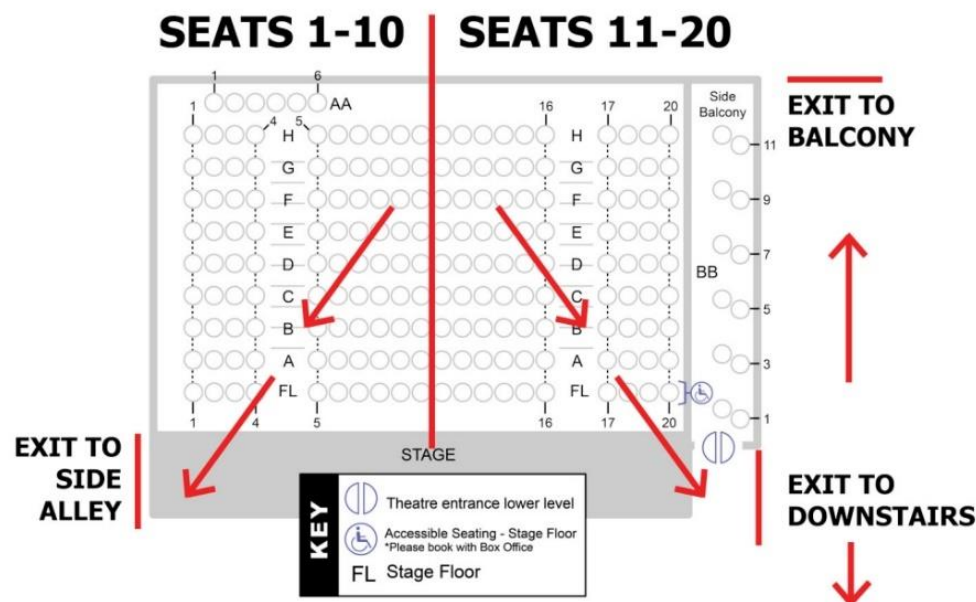
The LSPU Hall

3 Victoria Street
St. John's, NL

Visual Guide / Social Story



EXITING THE THEATRE



[ID: An image of the fire exits of the mainstage theatre. Arrows in red indicate to either go right to the Alley exit or left to the theatre exit.

When leaving the Hall, patrons on the right side of the theatre can leave through the side stage exit. Patrons on the left side can either leave through the main exit, or through the balcony exit, or down the lift. Staff/ushers will be on hand to help guide patrons to the appropriate exit. The bar may be open after the show for anyone who would like to hang out, have a drink, and talk to the cast/performers.



The LSPU Hall

3 Victoria Street
St. John's, NL

Visual Guide / Social Story



Thank you for spending some time with us at the LSPU Hall!

We hope you enjoy the show, and we hope to see you again.

If you have any questions about anything you have seen in this guide, please contact our Communications Manager at communications@lspuhall.ca.

LSPU Hall Box Office

3 Victoria Street
St. John's, NL A1C 3V2
Phone: (709) 753-4531 ext 200

Resource Centre for the Arts Theatre Company (RCAT)

3 Victoria Street
St. John's, NL A1C 3V2
Phone: (709) 753-4537



[ID: A photo of the Hall, a dark green building with white and pink trim. A sign on the front of the building reads Resource Centre for the Arts EST. 1903 LSPU]